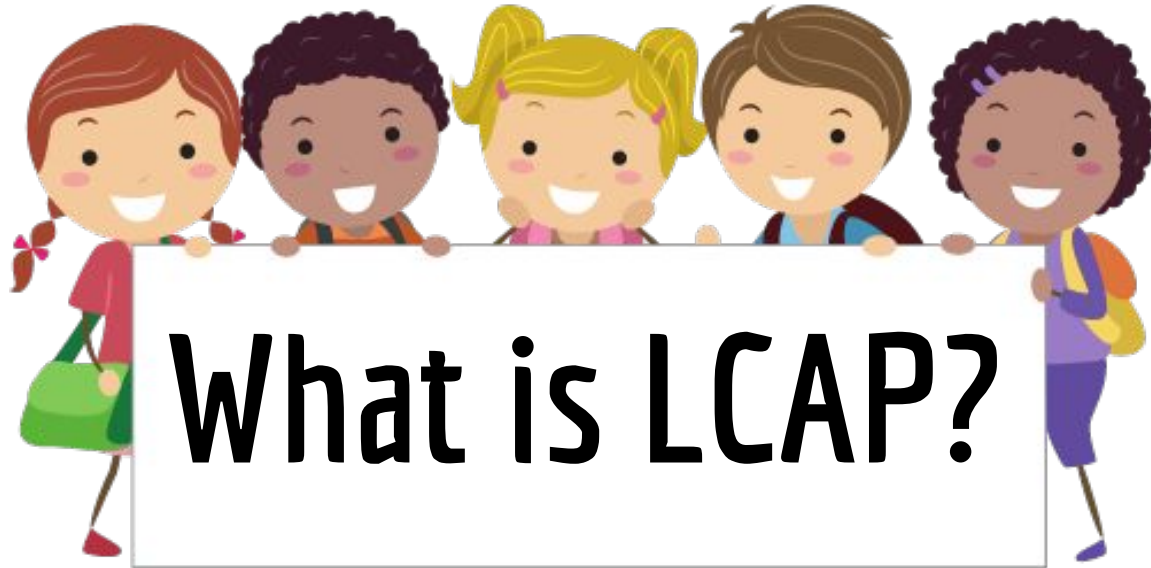




Local Control Accountability Plan

Equity Summit 2023

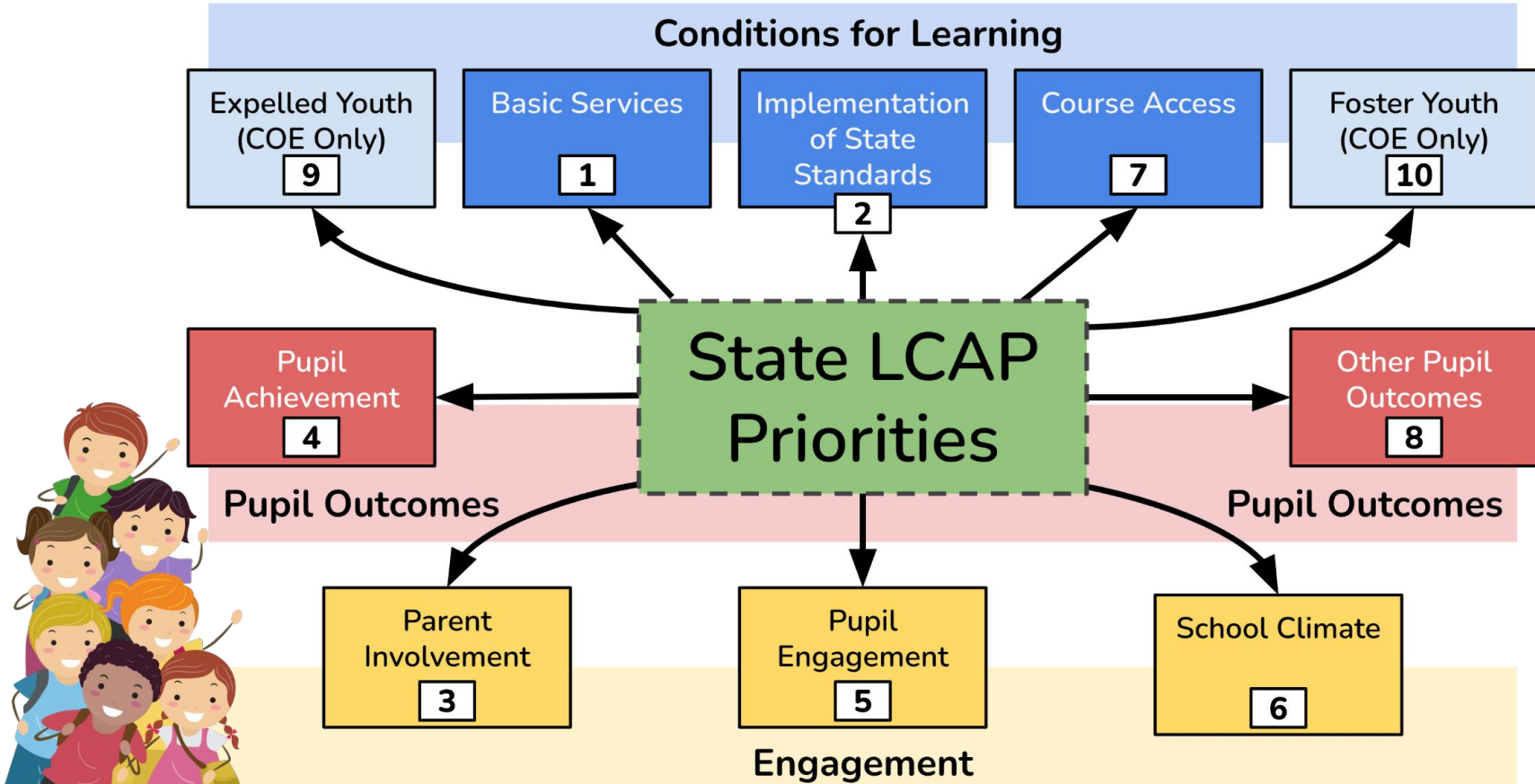




A plan that describes how districts meet annual goals for all students, based on specific state and local priorities.



Eight Priority Areas



LCAP - Conditions For Learning

Basic Services

Providing all students with access to fully credentialed teachers in their subject areas, as well as instructional materials that align with state standards, and safe, properly maintained school facilities.

Implementation of State Standards

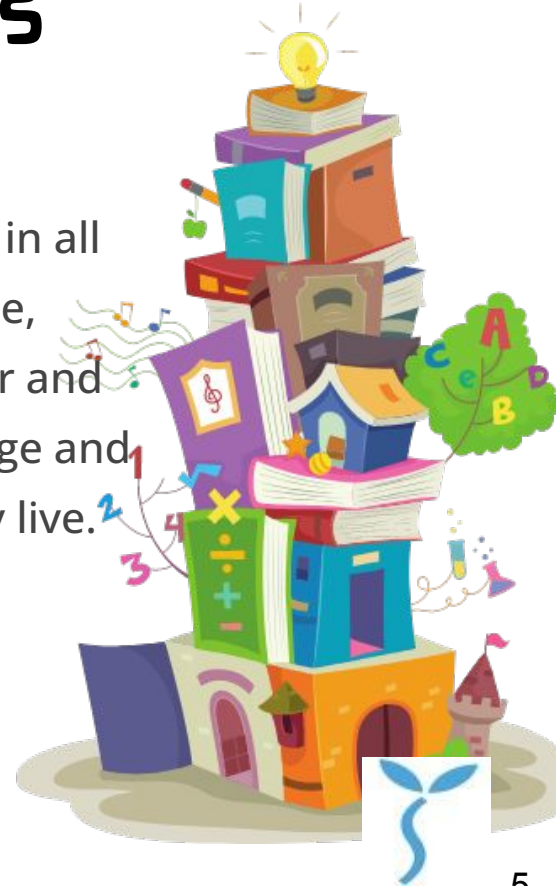
Ensuring school programs and services enable all students, including English learners, to access California's academic content and performance standards, such as Common Core Standards for English Language Arts and Math, Next Generation Science Standards, and English Language Development Standards.



LCAP - Conditions for Learning

Course Access

Ensuring all students have access to a broad course of study in all required subject areas, including math, social science, science, visual and performing arts, health, physical education, career and technical education and others, that prepares them for college and careers, regardless of what school they attend or where they live.



LCAP - Engagement

Student Engagement

Providing students with engaging programs and coursework that keep them in school, as measured in part by attendance rates, dropout rates and graduation rates.



School Climate

Factors both inside and outside the classroom that impact student success such as health, safety, student discipline and school connectedness, as measured in part by suspension and expulsion rates, and surveys of students, teachers and parents.



LCAP - Engagement

Parent Involvement

Efforts by the school district and schools to seek input from all parents, and to engage parents in decision-making, as well as promoting parent participation in programs that meet the needs of their students and all students.



LCAP - Pupil Outcomes

Student Achievement

Improving achievement and outcomes for all students, as measured in multiple ways, such as test scores, English proficiency and college and career preparedness.

Other Student Outcomes

Measuring other important indicators of student performance in all required areas of study.



Goal 1

Ensure all students have access to equitable conditions of learning by providing and investing in highly qualified staff, well-maintained facilities and equipment, as well as robust standards-aligned instructional materials and resources.



Key Actions



**Highly Qualified,
Diverse Staff**



**Standards Based
Teaching Materials
including Intervention
Supports**



**Technology
Integration and
Cyber Security**



**Curriculum
Adoption**



**District
Facilities**



Goal 2

Provide high quality, equitable and responsive instruction for ALL students, to prepare them for college and/or career readiness.



Key Actions



**Teacher
Leadership**



**Data Inspired Teaching and
Professional Development for All**



**Support for
Equitable Outcomes**



Goal 3

Ensure school and classroom environments provide Social Emotional Learning (SEL) and Culturally Responsive Teaching (CRT) for the Whole Child so that students can reach their full academic potential.



Key Actions



Alignment of Social Emotional Learning and Culturally Relevant Teaching Across All Sites



Focus on a Positive School Climate



Equity: A Cornerstone of Our Practices



Goal 4

Foster a welcoming and inclusive environment for all parents, families, and community stakeholders as partners in the education and support of all students' success in school.



Key Actions



**Use Clear and
Accessible
Communication**



**Conduct Regular
Surveys to
Engage Families
in Practices**



**Culturally
Responsive
Parent Education**



Goal 5

Accelerate learning outcomes for English Language Learners, as measured by local benchmark and state assessments, as well as an increase in the district reclassification rate.



Key Actions



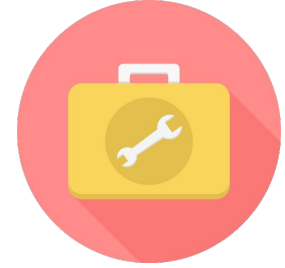
**Targeted Culturally
Responsive Professional
Development**



**Improved Instructional
Strategies in Designated
and Integrated ELD**



**Parent Advocacy through Site English
Learner Advisory Committees (ELAC) and
District ELAC Committee (DELAC)**



**Newcomer
Toolkit**



**Intensifying support for
English Language Learners,
Specifically those who are not
proficient**